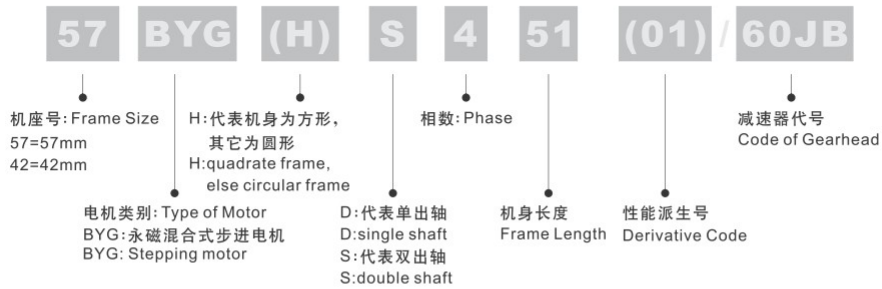


## 电机的型号命名 MODEL NUMBER OF MOTOR



## 通用技术条件 GENERAL SPECIFICATION

冷态绝缘电阻: 电机导电部分对机壳的冷态绝缘电阻不低于100MΩ; Cold insulation resistance of the conductive part of the motor to the housing is no less than 100MΩ

绝缘介电强度: 电机导电部分与机壳承受500V电压历时1min不击穿; Insulation Dielectric strength: the conductive part and the housing of the motor withstand 500V lasting 1min. for pressureproof experiment but can not be punctured

温升 < 80K Temperature rise: < 80K

噪音 < 50dB Noise: < 50dB

## 工作环境要求 OPERATING CONDITIONS

海拔不超过2500米; Altitude within 2500m

环境温度 -20℃ ~ 40℃; Ambient temperature: -20℃ ~ 40℃

相对湿度 < 90% (温度20℃时); Relative humidity ≤ 90% (temperature 20℃)

## 贮存环境要求 STORAGE CONDITIONS

空气温度: -5℃ ~ 35℃; Ambient temperature: -5℃ ~ 35℃

相对湿度: < 70%; Relative humidity ≤ 70%

通风良好; Good ventilation

通风良好, 空气中不带腐蚀性气体; No corrosive gas present

严禁与强磁性物体并存; No strong magnetite object present

## 注意事项 ATTENTION

依照接线方式正确与驱动器接线, 输入电压等级确保正确和正负极确保正确; to be sure correct input voltage grade

电机出轴与负载连接时不能重力敲打、挤压, 以免造成内部变形错位, 产生严重噪声或卡死现象; Don't beat or press when the motor connecting to the load to avoid internal deformation which will in turn cause noise and dead lock

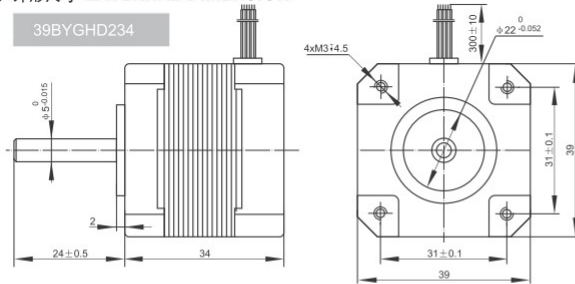
本品专利：  
提供直线运动的步进电机（专利号：200820167691.4）

**LINIX**® Since1968

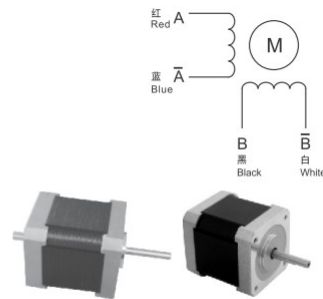
● 电机参数 SPECIFICATIONS

Type 型号	Poles 相数	Step angle 步距角	Current per phase 相电流	Inductance per phase 相电感	Holding torque 保持转矩	Rated speed 额定转速	Rated torque 额定转矩
		° /step	A/phase	mH/phase	Kg.cm	r/min	Kg.cm
39BYGHD234	2	1.8	0.8	2.8	1.2	200	0.8

● 外形尺寸 EXTERNAL DIMENSION



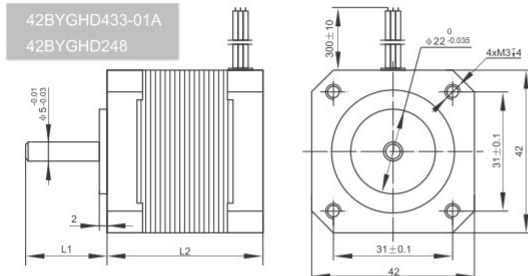
● 接线图 WIRING DIAGRAM



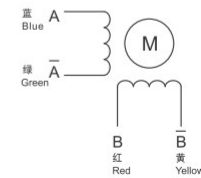
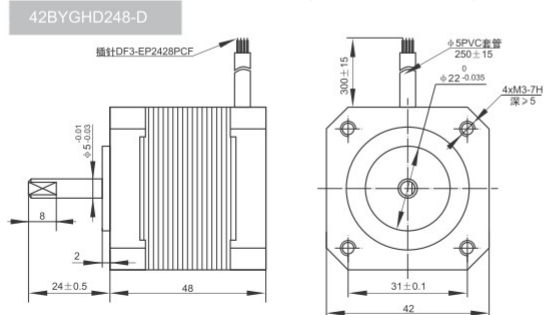
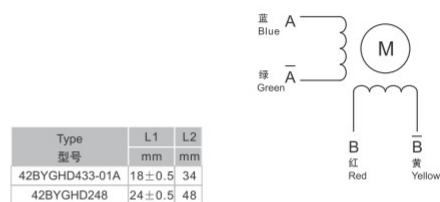
● 电机参数 SPECIFICATIONS

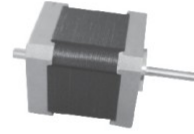
Type 型号	Poles 相数	Step angle 步距角	Current per phase 相电流	Inductance per phase 相电感	Holding torque 保持转矩	Rated speed 额定转速	Rated torque 额定转矩
		° /step	A/phase	mH/phase	Kg.cm	r/min	Kg.cm
42BYGHD234-01A	2	1.8	0.4	30	2	150	1.5
42BYGHD439-01	4	1.8	0.8	7.5	2.5	200	2
42BYGHDS444-02A	4	1.8	0.5	26	3.5	200	2.5
42BYGHD248	2	1.8	1.2	7	4	300	2.5
42BYGHD248-D	2	1.8	2	2.2	5	300	5
42BYGHD248/60JB	2	1.8	1.2	7	4	300	2.5
42BYGHD248/70JB	2	1.8	1.2	7	4	300	2.5

● 外形尺寸 EXTERNAL DIMENSION

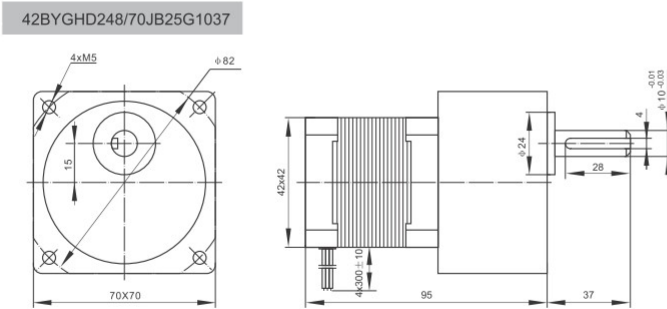
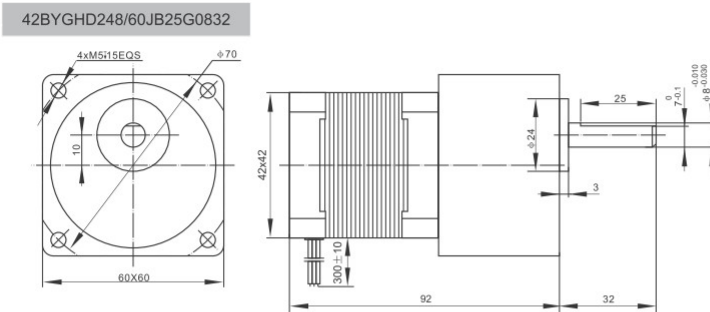
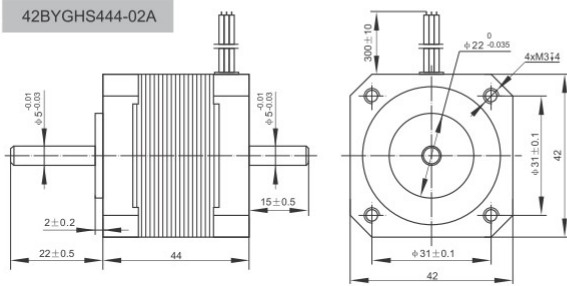
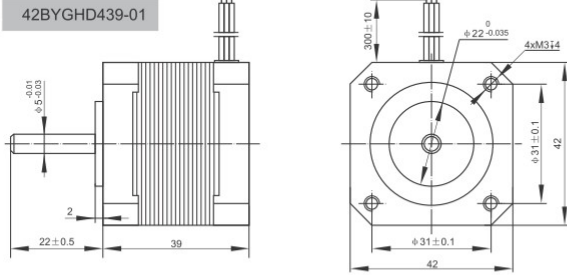


● 接线图 WIRING DIAGRAM

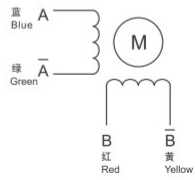
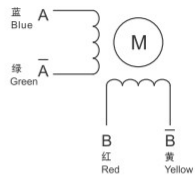
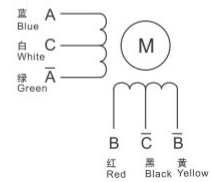
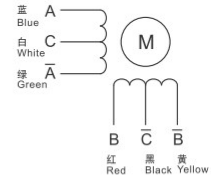




● 外形尺寸 EXTERNAL DIMENSION



● 接线图 WIRING DIAGRAM



本品专利：  
步进减速电机（蜗轮）（专利号：201030038564.7）

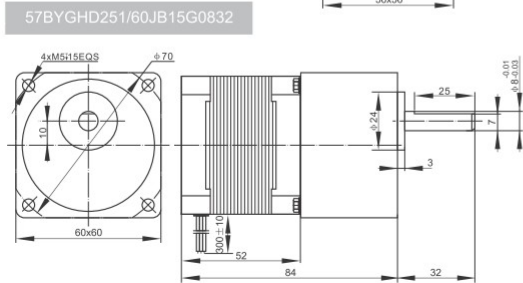
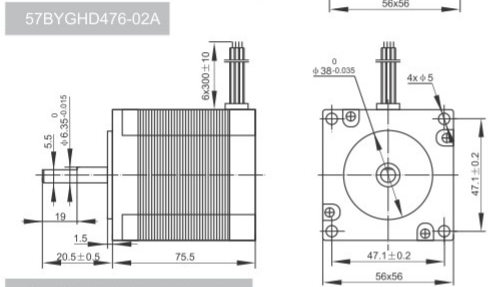
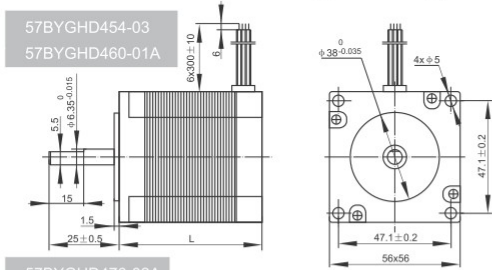
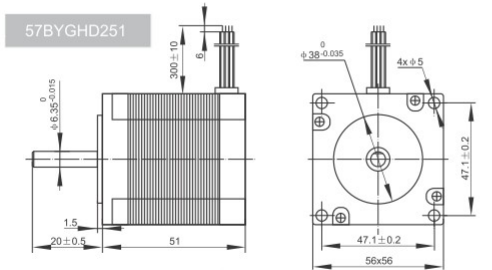
**LINIX**® Since 1968



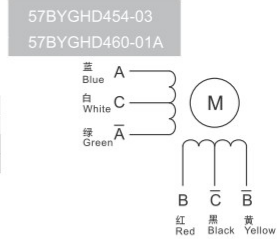
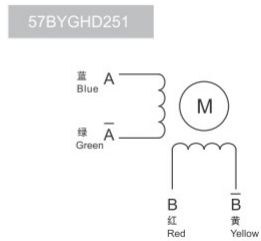
● 电机参数 SPECIFICATIONS

Type 型号	Poles 相数	Step angle 步距角	Current per phase 相电流	Inductance per phase 相电阻	Holding torque 保持转矩	Rated speed 额定转速	Rated torque 额定转矩
		°/step	A/phase	Ω/phase	Kg.cm	r/min	Kg.cm
57BYGHD251	2	1.8	1.2	8	6	200	4
57BYGHD454-03	4	1.8	2	3.2	7	300	4
57BYGHD460-01A	4	1.8	4	1.8	8.5	300	5
57BYGHD476-02A	2	1.8	2	2.25	13.5	200	10
57BYGHD251/60JB	2	1.8	1.2	8	6	200	4
57BYGHD476-02A/60JB	2	1.8	2	2.25	13.5	200	10
57BYGHS276-03	2	1.8	3	4	15	1000	11

● 外形尺寸 EXTERNAL DIMENSION



● 接线图 WIRING DIAGRAM



Type 型号	L mm
57BYGHD454-03	54
57BYGHD460-01A	60

