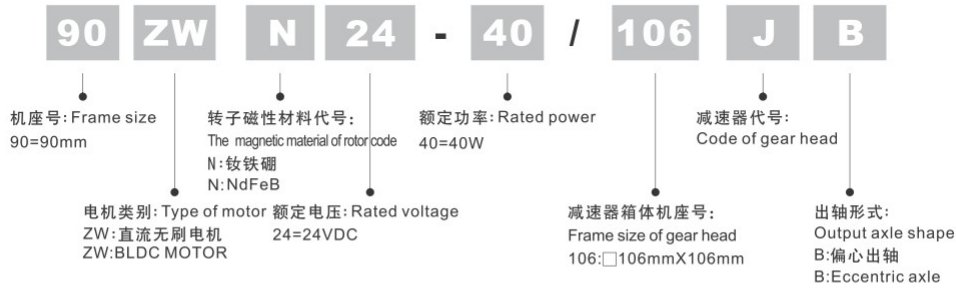


电机的型号命名 MODEL NUMBER OF MOTOR



通用技术条件 GENERAL SPECIFICATION

冷态绝缘电阻: 电机导电部分对机壳的冷态绝缘电阻不低于100MΩ;
Cold insulation resistance of the motor conductive part to the housing is no less than 100MΩ

绝缘介电强度: 额定电压≤60V, 电机导电部分与机壳能承受500V历时1min的耐压实验而不击穿, 额定电压>60V, 能承受1500V历时1min的耐压实验而不击穿。
Insulation Dielectric strength: the conductive part and the housing of the motor withstand 500V lasting 1min. for pressure proof experiment but can not be punctured, when the rated voltage≤60V; the conductive part and the housing of the motor withstand 1500V lasting 1min. for pressure proof experiment but can not be punctured, when the rated voltage>60V.

电机温升: < 75K Temperature rise: ≤75K

电机噪音: < 55dB Noise: ≤40dB

工作环境要求 OPERATING CONDITIONS

海拔不超过1000米; Altitude within 1000 m

环境温度 -25℃~40℃; Ambient temperature: -25℃~40℃

相对湿度≤90%(温度20℃时); Relative humidity≤90%(temperature 20℃)

贮存环境要求 STORAGE CONDITIONS

空气温度: -10℃~40℃; Ambient temperature: -10℃~40℃

相对湿度: <90%; Relative humidity<90%

通风良好; Good ventilation

空气中不带腐蚀性气体; No corrosive gas present

严禁与强磁性物体并存; No strong magnetic object present

注意事项 ATTENTION

输入电压等级确保正确; To be sure correct input voltage grade

电源正负极确保正确; To be sure positive and negative pole of power supply are right

连接线结后不允许拆结, 以免相位搞错, 引起电流过大, 导致控制器烧毁;
... Connection line is not allowed to be untied once tied so that not to mess up the phase, otherwise it may arise an excess of current to result in burning the controller

电机出轴与负载连接时不能重力敲打、挤压, 以免造成内部变形错位, 产生严重噪声或卡死现象;
... Do not beat or press the motor when connecting to the load to avoid noise and dead lock

严禁与强磁性物体并存; No put together with strong magnets

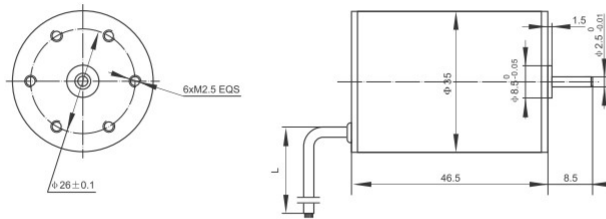
LINIX® Since 1968



● 电机参数 SPECIFICATIONS

Type 型号	No. of m 相数	No. of p 极数	Rated voltage 额定电压	Rated current 额定电流	Rated torque 额定转矩	Rated power 额定功率	Rated speed 额定转速
			V DC	A	g.cm	W	r/min
35ZWN12-4	3	4	12	0.4	130	4	3000
35ZWN12-5-02	3	4	12	1	120	5	4000
35ZWN24-5-03	3	4	24	1.5	640	20	3000

● 外形尺寸 EXTERNAL DIMENSION

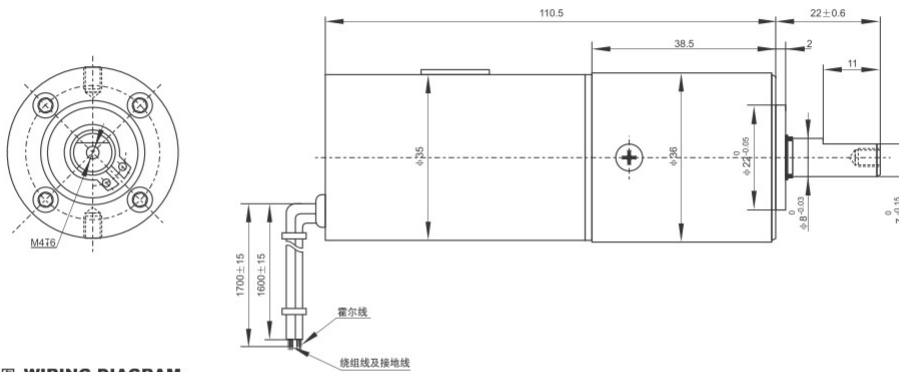


Type 型号	L mm
35ZWN12-4	50
35ZWN12-5-02	300
35ZWN24-5-03	500

● 电机参数 SPECIFICATIONS

Type 型号	No. of m 相数	No. of p 极数	Rated voltage 额定电压	Rated current 额定电流	Rated torque 额定转矩	Rated power 额定功率	Rated speed 额定转速
			V DC	A	N.m	W	r/min
35ZWN24-15-A/PC36-23A0822-01	3	4	24	1.7	1.2	15	120

● 外形尺寸 EXTERNAL DIMENSION



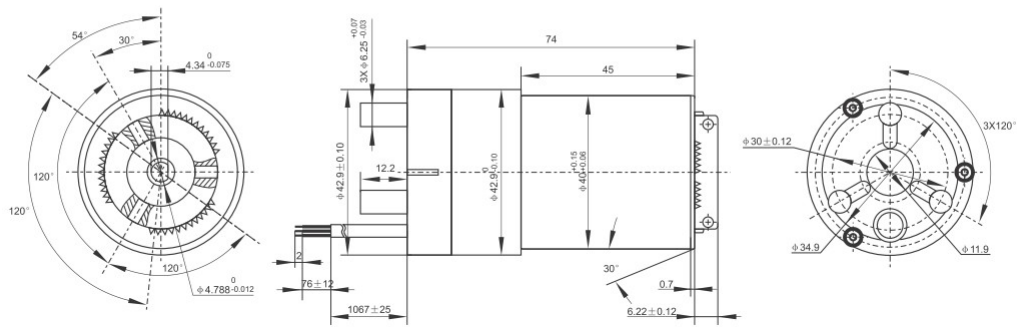
● 接线图 WIRING DIAGRAM

粗白线 White,thick	粗蓝线 Blue,thick	粗绿线 Green,thick	红线 Red	黑线 Black	细白线 White,thin	细蓝线 Blue,thin	细绿线 Green,thin	细黄线 Yellow,thin
A相绕组 Motor A phase	B相绕组 Motor B phase	C相绕组 Motor C phase	霍尔电源+ Hall power+	霍尔电源GND Hall power GND	霍尔信号1 Hall signal 1	霍尔信号2 Hall signal 2	霍尔信号3 Hall signal 3	GND

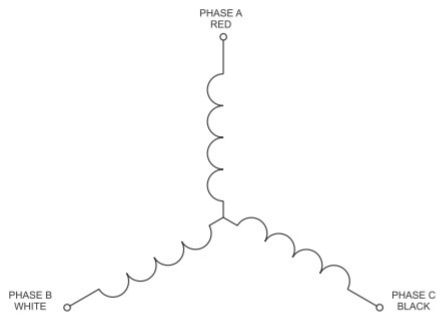
● 电机参数 SPECIFICATIONS

Type 型号	No. of m 相数	No. of p 极数	Rated voltage	Rated current	Rated torque	Rated power	Rated speed
			V DC	A	N.m	W	r/min
40ZWN24-40	3	4	24	3	0.064	40	5500

● 外形尺寸 EXTERNAL DIMENSION

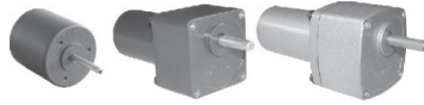


● 接线图 WIRING DIAGRAM



MOTOR WIDINGS 3PHASE

MOTOR LEAD WIRE COLOR CODE		
COLOR	LEAD	DESCRIPTION
RED	PHASE A	MOTOR
WHITE	PHASE B	LEADS
BLACK	PHASE C	22 AWG
BLUE	4.5 TO	HALL
	24VDC	EFFECTS
BROWN	S1(A)	SENSORS
ORANG	S1(B)	LEADS
YELLOW	S1(C)	26AWG
GREEN	GND	

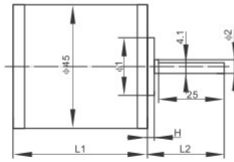
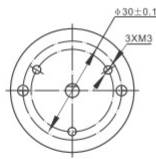
LINIX[®] Since 1968

● 电机参数 SPECIFICATIONS

Type 型号	No. of m 相数	No. of p 极数	Rated voltage	Rated current	Rated torque	Rated power	Rated speed
			V DC	A	g.cm	W	r/min
45ZWN24-10	3	4	24	0.8	360	10	2600
45ZWN24-13	3	4	24	1.4	800	13	1600
45ZWN24-15	3	4	24	1.4	700	15	2100
45ZWN24-25	3	4	24	1.8	820	25	3000
45ZWN24-30	3	4	24	2	900	30	3200
45ZWN24-40	3	4	24	2.3	990	40	4000
45ZWN24-90	3	4	24	5.8	930	90	9350

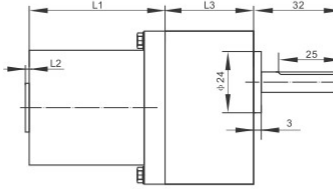
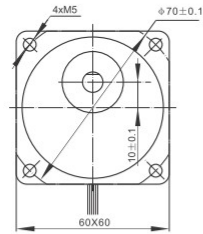
● 外形尺寸 EXTERNAL DIMENSION

45ZWN



Power 功率	L1 mm	L2 mm	H mm	φ mm	φ2 mm
10W	46.5	29.5	1.5	19 ^{+0.2} ₀	5 ^{+0.015} ₀
13-90W	80	28	2.5	21 ^{+0.033} ₀	5 ^{+0.012} ₀

45ZWN/60JB

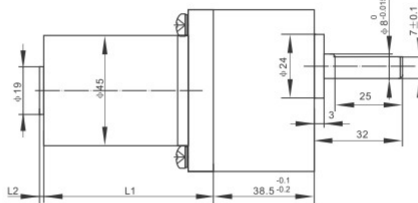
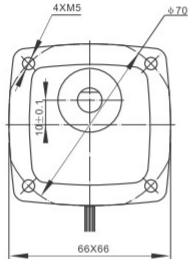


Power 功率	L1	L2	H	引出线位置
10W	51	1.5		侧面
30W	83.6	0		底部

Ratio 减速比	L3
1:3-1:18	32
1:20-1:600	40

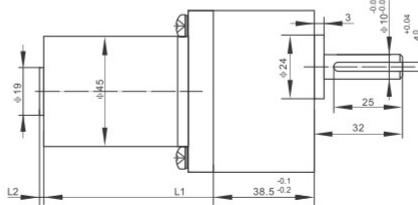
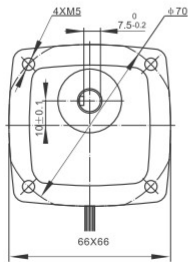
60JB Ratio 减速比	1:3	1:5	1:8	1:9	1:12.5	1:15
	1:18	1:25	1:30	1:36	1:50	1:60
	1:75	1:90	1:100	1:120	1:150	1:180
					0	1:233

45ZWN/66JB



Power 功率	L1	L2
10W	58.5	1.5
30W	90	0

45ZWN/66JB



66JB Ratio 减速比	1:10	1:20	1:30	1:60
	1:100	1:120	1:150	1:180

Power 功率	L1	L2
10W	58.5	1.5
30W	90	0

本品专利：
雕刻机用电机 (专利号: 200920198928.X)
一种风扇叶片与转轴连接结构 (专利号: 201020184933.6)
霍尔固定结构 (专利号: 200920198931.1)

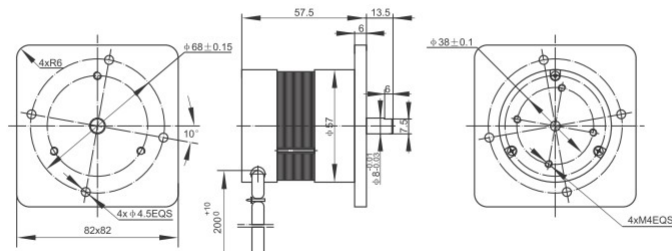
LINIX[®] Since 1968

● 电机参数 SPECIFICATIONS

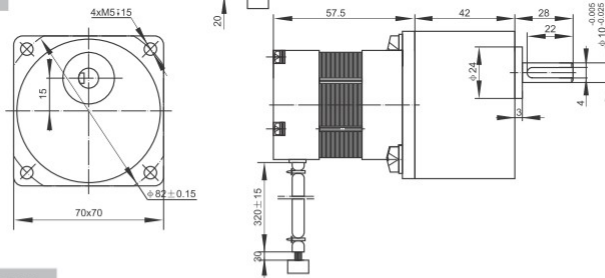
Type 型号	No. of m 相数	No. of p 极数	Rated voltage	Rated current	Rated torque	Rated power	Rated speed
			额定电压	额定电流	额定转矩	额定功率	额定转速
57ZWN70-40-A	3	4	70	1.2	510	40	7500
57ZWN24-30/70JB	3	4	24	2.2	950	30	3000
57ZWN24-40-A/PC57-36	3	4	24	2.5	1050	40	3700

● 外形尺寸 EXTERNAL DIMENSION

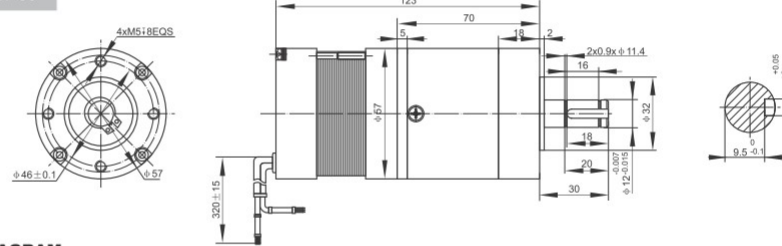
57ZWN70-40-A



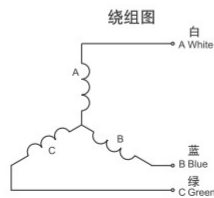
57ZWN24-30/70JB



57ZWN24-40-A/PC57-36



● 接线图 WIRING DIAGRAM



White,thick 粗白线	Blue,thick 粗蓝线	Green,thick 粗绿线	Red 红线	Black 黑线	White,thin 细白线	Blue,thin 细蓝线	Green,thin 细绿线
A相绕组	B相绕组	C相绕组	霍尔电源+	霍尔电源GND	霍尔信号1	霍尔信号2	霍尔信号3
Motor A phase	Motor B phase	Motor C phase	Hall power+	Hall power GND	Hall signal1	Hall signal2	Hall signal3

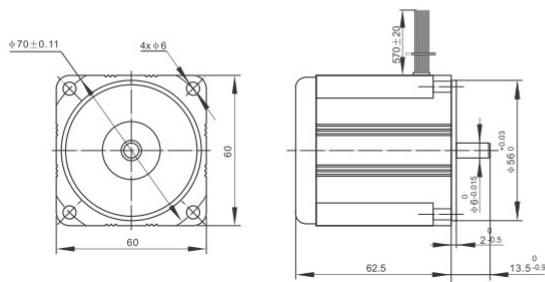
LINIX® Since 1968



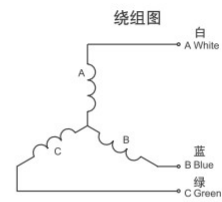
● 电机参数 SPECIFICATIONS

Type 型号	No. of m 相数	No. of p 极数	Rated voltage 额定电压	Rated current 额定电流	Rated torque 额定转矩	Rated power 额定功率	Rated speed 额定转速
			V DC	A	g.cm	W	r/min
60ZWN24-5	3	8	24	0.4	320	5	1500
60ZWN24-25	3	8	24	1.5	750	25	3200
60ZWN24-M/MJ12G1028	3	8	24	3.5	2000	50	2500

● 外形尺寸 EXTERNAL DIMENSION

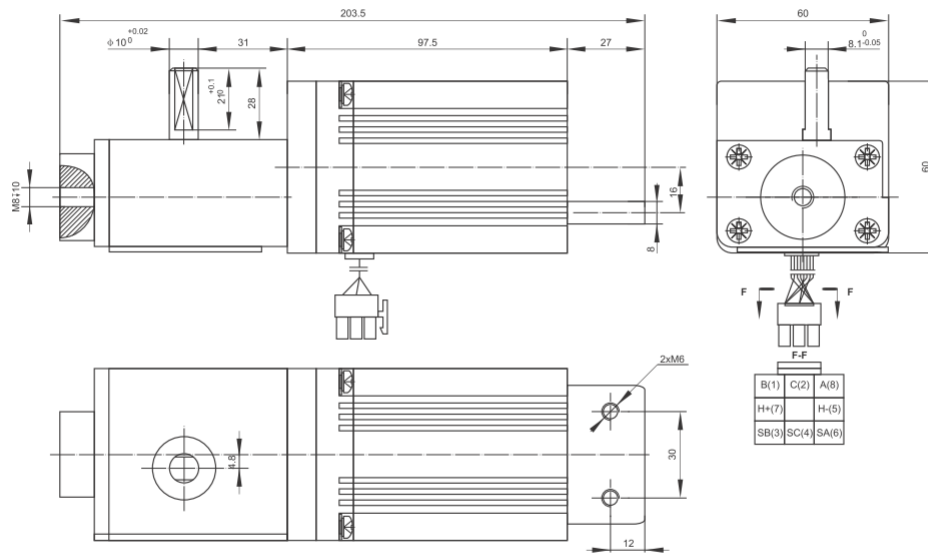
60ZWN24-5
60ZWN24-25

● 接线图 WIRING DIAGRAM



White, thick 粗白线	Blue, thick 粗蓝线	Green, thick 粗绿线	Red 红线
A相绕组 Motor A phase	B相绕组 Motor B phase	C相绕组 Motor C phase	霍尔电源+ Hall power +
Black 黑线	White, thin 细白线	Blue, thin 细蓝线	Green, thin 细绿线
霍尔电源GND Hall power GND	霍尔信号1 Hall signal1	霍尔信号2 Hall signal2	霍尔信号3 Hall signal3

60ZWN24-M/MJ12G1028



63ZWN

直流无刷电机
BLDC motor

本品专利：
无刷电机霍尔结构 (专利号: 200820120977.7)
霍尔固定结构 (专利号: 200820088512.8)

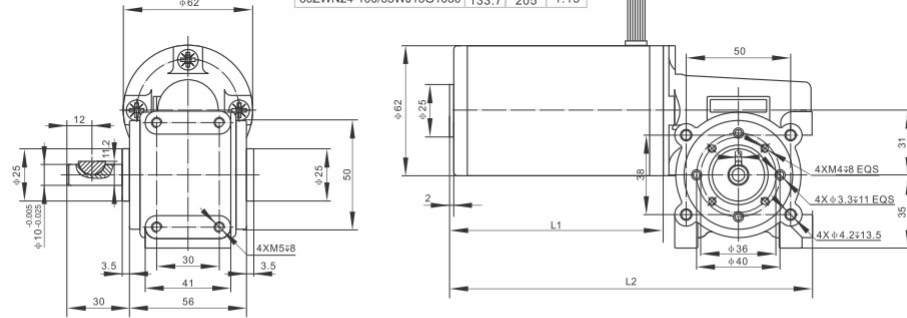
● 电机参数 SPECIFICATIONS

Type 型号	No. of m 相数	No. of p 极数	Rated voltage 额定电压	Rated current 额定电流	Rated torque 额定转矩	Rated power 额定功率	Rated torque 额定转矩
			V DC	A	g.cm	W	r/min
63ZWN24-40	3	8	24	2.8	1400	40	2800
60ZWN24-100	3	8	24	6.5	3000	100	3200



● 外形尺寸 EXTERNAL DIMENSION

Type 型号	L1 mm	L2 mm	Ratio 减速比
63ZWN24-40/63WJ15G1030	103.7	175	1:15
60ZWN24-100/63WJ15G1030	133.7	205	1:15



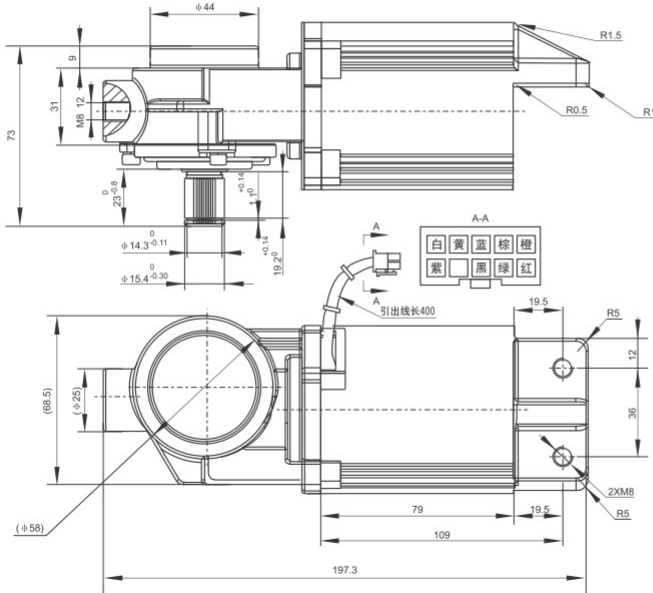
68ZWN

直流无刷电机
BLDC motor

● 电机参数 SPECIFICATIONS

Type 型号	No. of m 相数	No. of p 极数	Rated voltage 额定电压	Rated current 额定电流	Rated torque 额定转矩	Rated power 额定功率	Rated speed 额定转速
			V DC	A	N.m	W	r/min
68ZWN110-50/58WJ10G1523	3	6	110	1.1	2.5	50	190

● 外形尺寸 EXTERNAL DIMENSION



插件序号	颜色 COLOUR	信号 SIGNAL
1	白 WHITE	U
2	黄 YELLOW	R
3	蓝 BLUE	H-
4	棕 BROWN	Hs3
5	橙 ORANGE	Hs1
6	紫 PURPLE	V
7		
8	黑 BLACK	W
9	绿 GREEN	H+
10	红 RED	Hs2

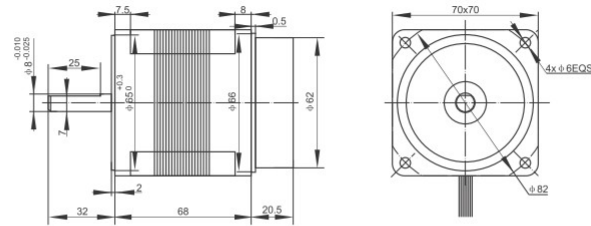
LINIX[®] Since 1968

● 电机参数 SPECIFICATIONS

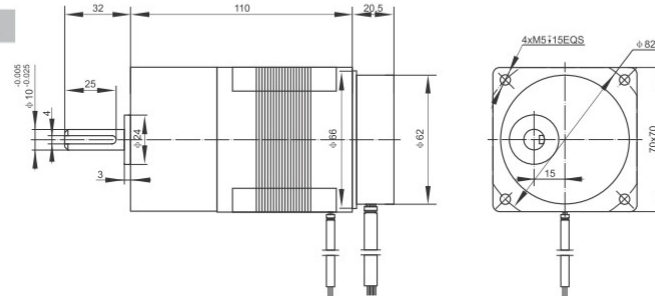
Type 型号	No. of m 相数	No. of p 极数	Rated voltage 额定电压	Rated current 额定电流	Rated torque 额定转矩	Rated power 额定功率	Rated speed 额定转速
			V DC	A	g.cm	W	r/min
70ZWN24-30	3	8	24	1.8	1200	30	2450
70ZWN24-30-A/70JB	3	8	24	1.8	1200	30	2450
70ZWN24-30-B/76JB	3	8	24	1.8	1200	30	2450

● 外形尺寸 EXTERNAL DIMENSION

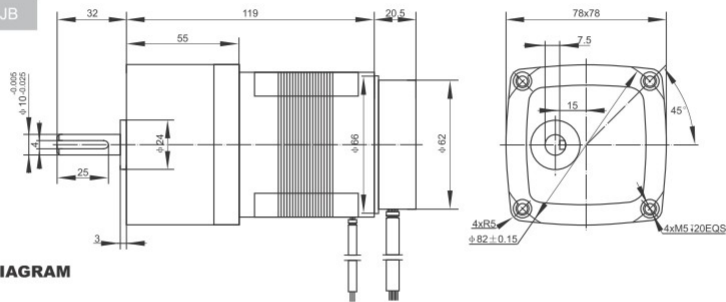
70ZWN24-30



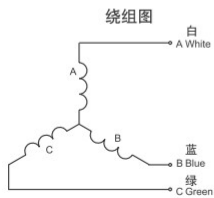
70ZWN24-30-A/70JB



70ZWN24-30-B/76JB



● 接线图 WIRING DIAGRAM



White,thick 粗白线	Blue,thick 粗蓝线	Green,thick 粗绿线	Red 红线	Black 黑线	White,thin 细白线	Blue,thin 细蓝线	Green,thin 细绿线
A相绕组	B相绕组	C相绕组	霍尔电源+	霍尔电源GND	霍尔信号1	霍尔信号2	霍尔信号3
Motor A phase	Motor B phase	Motor C phase	Hall power+	Hall Power GND	Hall signal1	Hall signal2	Hall signal3

90ZWN

直流无刷电机
BLDC motor

本品专利：
外转子结构的电机及其风扇 (专利号: 200810062413.7)
霍尔固定结构 (专利号: 200820088512.8)
外转子式风扇 (专利号: 200820088508.1)
内置控制器直流无刷电机 (专利号: 200820088510.9)
一体式绕组绝缘结构 (专利号: 200820088505.8)
定子与线路板配合结构 (专利号: 200820088265.1)
外转子结构的电机及其风扇 (专利号: 200820088509.6)
波纹垫片 (专利号: 200920171722.4)

霍尔保护固定架 (专利号: 200920199889.5)
霍尔固定架 (专利号: 200920198930.7)

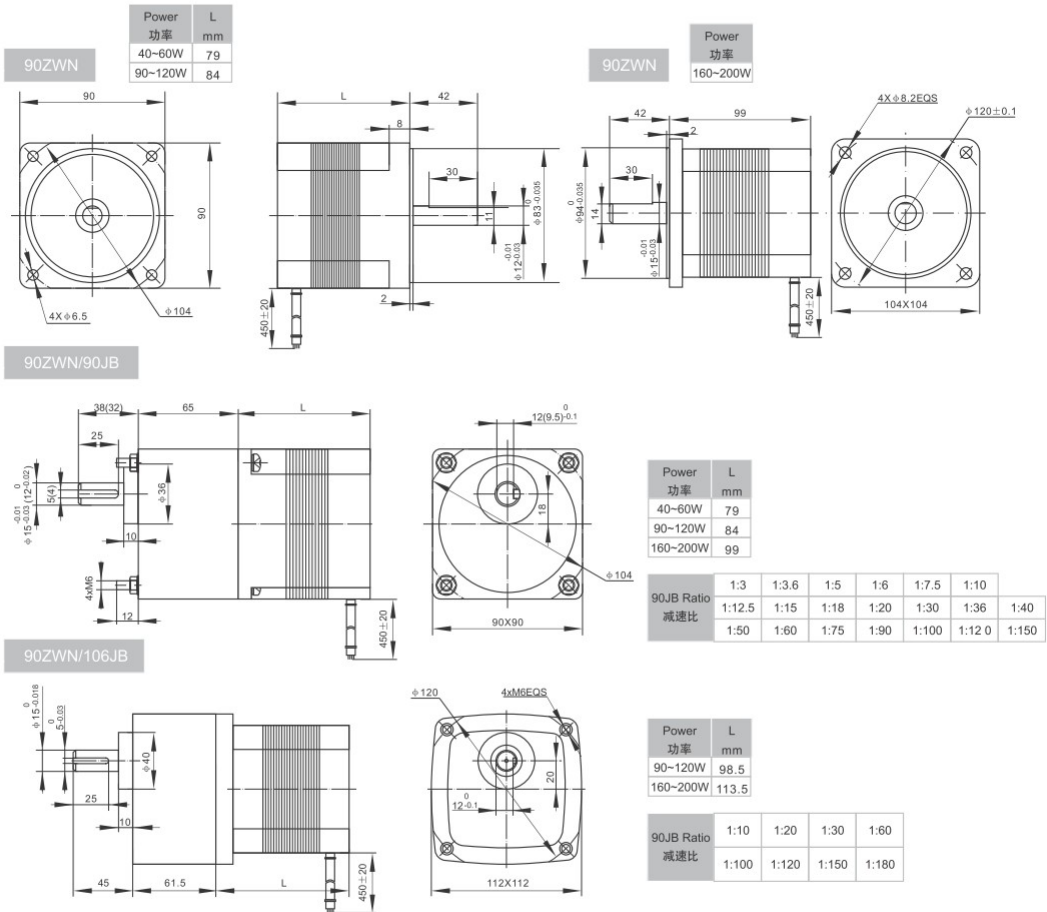
LINIX® Since 1968



● 电机参数 SPECIFICATIONS

Type 型号	No. of m 相数	No. of p 极数	Rated voltage 额定电压	Rated current 额定电流	Rated torque 额定转矩	Rated power 额定功率	Rated speed 额定转速
			V	A	g.cm	W	r/min
90ZWN24-40	3	4	24 DC	3.4	2600	40	1500
90ZWN24-60	3	4	24 DC	4	3900	60	1500
90ZWN24-90	3	4	24 DC	6	5850	90	1500
90ZWN24-120	3	4	24 DC	6.8	7800	120	1500
90ZWN24-160	3	4	24 DC	9.9	10400	160	1500
90ZWN24-200	3	4	24 DC	11.5	13200	200	1500
90ZWN220-40	3	4	220 AC	0.6	2600	40	1500
90ZWN220-60	3	4	220 AC	0.73	3900	60	1500
90ZWN220-90	3	4	220 AC	1.1	5850	90	1500
90ZWN220-120	3	4	220 AC	1.14	7800	120	1500
90ZWN220-160	3	4	220 AC	1.25	10400	160	1500
90ZWN220-200	3	4	220 AC	1.45	13200	200	1500

● 外形尺寸 EXTERNAL DIMENSION

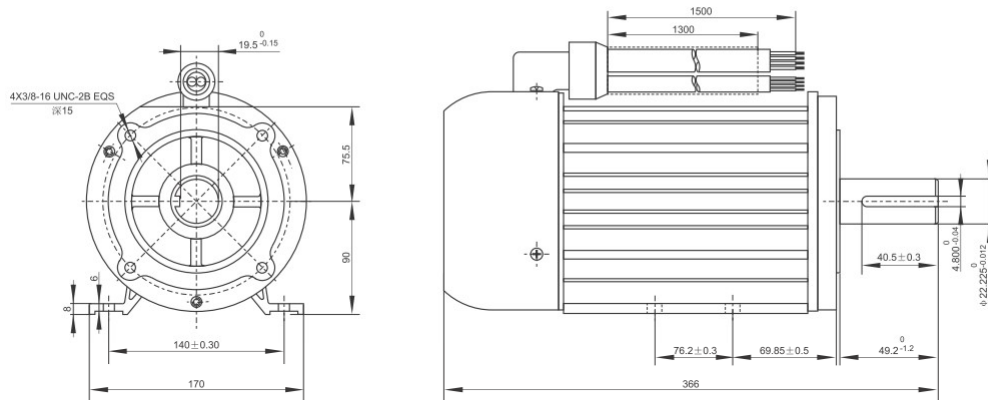


本品专利：
无刷直流电机 (130ZWN) (专利号: 200930199363.2)

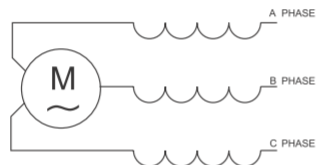
● 电机参数 SPECIFICATIONS

Type 型号	No. of m 相数	No. of p 极数	Rated voltage	Rated current	Rated torque	Rated power	Rated speed
			V DC	A	N.m	W	r/min
190ZWN120-2580-C	3	6	120	30	18	2580	1350

● 外形尺寸 EXTERNAL DIMENSION



● 接线图 WIRING DIAGRAM



MOTOR WIRE	BLACK	BROWN	BLUE	YELLOW/GREEN
12AWG LEAD	A PHASE	B PHASE	C PHASE	GND
HALL SIGNAL	WHITE	YELLOW	GREEN	RED
28AWG LEAD	HALL1	HALL2	HALL3	VCC GND